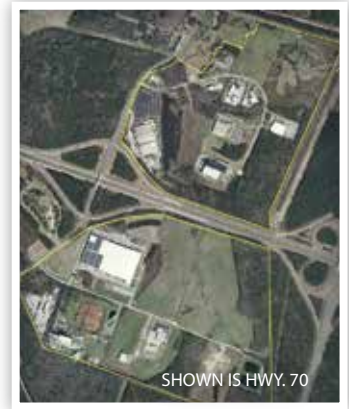
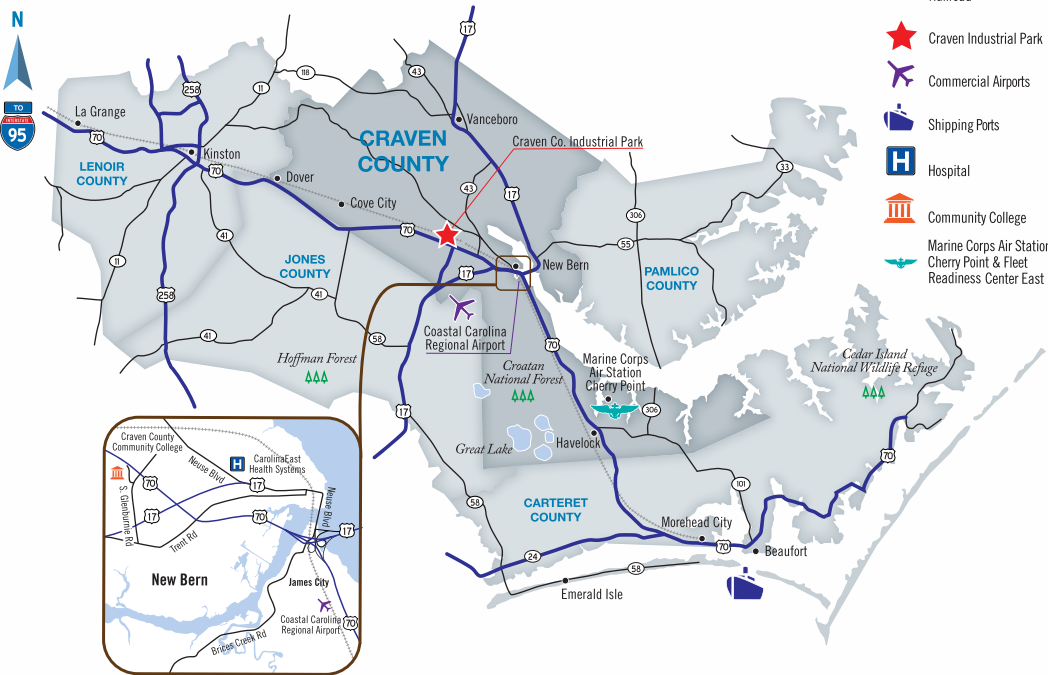


Site Assets

- 13 LOTS AVAILABLE
- 12 OF 13 LOTS OWNED BY CRAVEN COUNTY
- ALL UTILITIES AVAILABLE, INCLUDING FIBER OPTIC CABLE

Craven County INDUSTRIAL PARK



CURRENT TENANTS INCLUDE

- MOEN
- BSH HOME APPLIANCES
- CRAVEN COUNTY WOOD ENERGY
- DUKE PROGRESS ENERGY
- PIEDMONT NATURAL GAS
- WHEATSTONE
- CHATSWORTH PRODUCTS
- AYLWARD ENTERPRISES
- CAROLINA TECHNICAL PLASTICS
- MUTUAL DISTRIBUTING
- URETHANE INNOVATORS

The Craven County Industrial Park is located at the intersection of Clarks Road and US 70 just outside of New Bern, North Carolina. Situated just minutes from Greenville, Kinston, and Jacksonville, the park is convenient to the Port of Morehead City, Raleigh, and Wilmington. A main line North Carolina Railroad Company (operated by Norfolk Southern) railroad track is adjacent to the site with designated railroad rights-of-way entering the park. The park is served by Duke Progress Energy and City of New Bern water and sewer.

Craven County Economic Development

Timothy S. Downs
Economic Development Director
Phone: 252.633.5300

E-mail: timothy.downs@cravencountync.gov

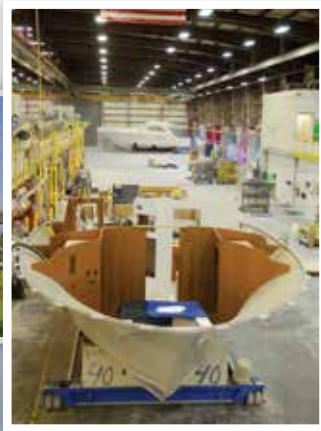
COMMUNITY PROFILE

CRAVEN COUNTY, NC

A closer look at Craven County reveals an ideal locale for business, industry, recreation, leisure and living. Craven County is "home" for 105,595 residents and is anchored by the city of New Bern, a city rich in history and resources. New Bern is situated on the confluence of the Trent and Neuse rivers and is a haven for boaters, fisherman and industry alike. As part of the Inner Banks, Eastern North Carolina's inland coastal region, Craven County has miles of streams and acres of lakes nestled among rural farm areas, scenic waterfronts and over 150,000 acres of forest land. The county is geographically situated in close proximity to major metropolitan areas; New Bern is located 96 miles north of Wilmington, NC, 113 miles southeast of Raleigh, NC and 164 miles south of Norfolk, VA.



- o Mild Four-Season Climate
- o Home to the Marine Corps Air Station, Cherry Point
- o Abundance of Recreational Opportunities
- o Part of [NC Aerospace Corridor](#)
- o Significant Space and Resources for All Industries
- o Work Force Training for Skilled and General Labor
- o Variety of Educational Opportunities, both Public and Private
- o Home of the Croatan National Forest
- o State-of-the-Art Healthcare for Civilian and Military Families
- o Multitude of Incentives and Programs for Economic Development



Craven County

Economic Development

Timothy S. Downs
Economic Development Director
Phone: 252.633.5300
E-mail: timothy.downs@cravencountync.gov